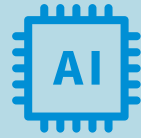


Key Functions



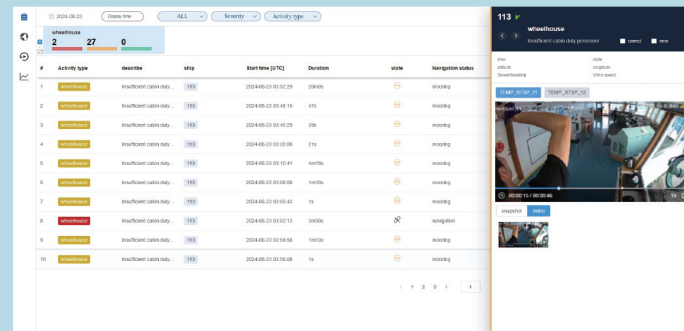
● Real-time Monitoring

MetaSight provides 24/7 real-time monitoring, allowing for alarms and instant video playback both onboard the ship and at the office ashore. It enables customers to pre-set detection scenarios and alert levels based on management guidelines and to flag potential violations of rules and regulations.



● Risks Detection

Based on fusion analysis on real-time videos and data fed through the DCT (Data Collection Terminal), it promptly identifies potential hazards, delivering timely reminders or alerts to proactively address and prevent accidents, ensuring the safety of both crew and vessels.



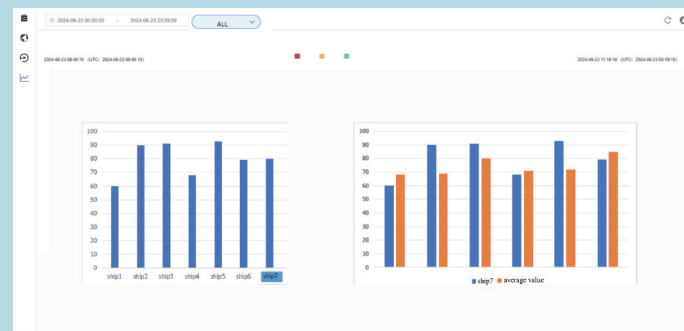
● Visual Reports

MetaSight creates multi-dimensional smart statistical graphs from accumulated historical data, providing deep insights into vessel performance and risk factors, and empowering fact-based decision-making.



● AI Learning-enabled Improvement

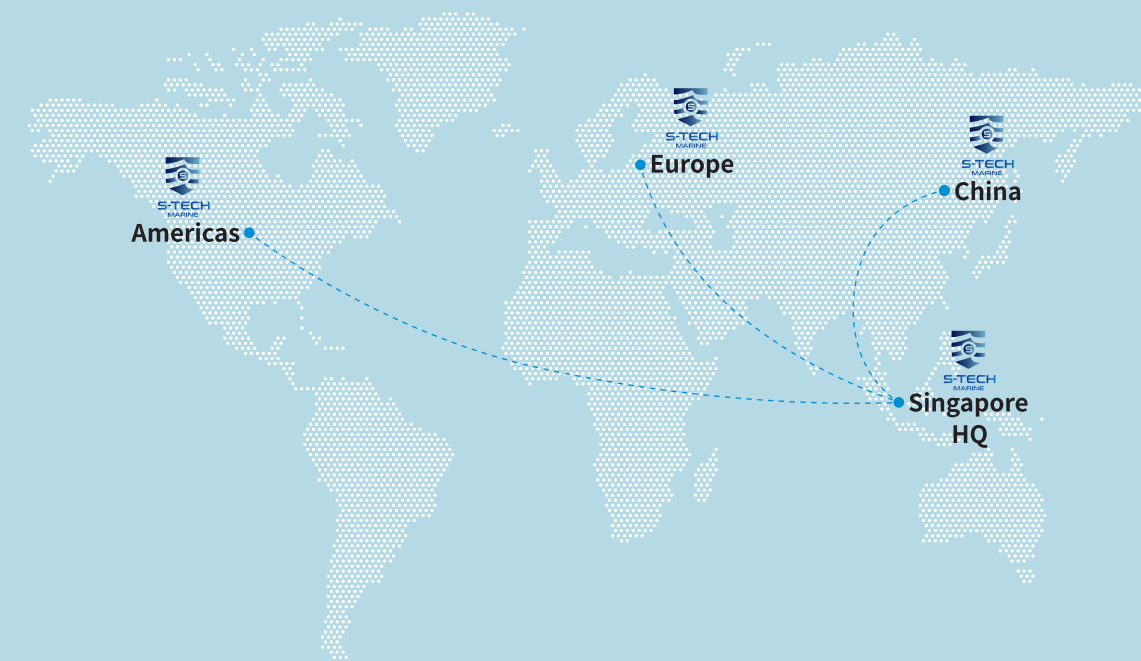
As your fleet accumulates data and shares best practices, the built-in AI learning feature continuously enhances system accuracy. As a result, MetaSight can assist you in improving management efficiency, mitigating risks, and reducing costs.



About us

S-Tech delivers cutting-edge digital solutions for ship owners through innovative technologies. We excel in digitalization, data communication, cyber security, algorithm R&D, and system integration, offering bespoke, one-stop solutions tailored to customer needs.

Based in Singapore, our operations extend across the Americas, Asia-Pacific, China, and Europe. Early versions of MetaSight have demonstrated their effectiveness in real-world maritime environments, providing substantial benefits to hundreds of ships and operators. This success is driven by our dedicated IT team of 50+ professionals.



S-Tech Marine (s) PTE. LTD.

#08-01 100 Pasir Panjang Road, Singapore 118518
 info@s-techmarine.com
 www.s-techmarine.com

Distributors:

For Europe
Tecway Industrial Europe GmbH
 +49 179 670 4889
 yingying.wan@tecwayintl.com
 www.tecwaymt.com



For Asia Pacific and Americas
Hostmost Group
 North America +1-604-2931730
 Asia +65-62502687
 globalservice@hostmostgroup.com
 www.hostmostgroup.com



Solutions can also be **customized** to meet specific user needs

Improve safety, Creating a safer working environment, and eventually Reduce overall operating cost

MetaSight improves shipping safety, by integrating features like real-time monitoring, precise recognition, and intelligent alert. It covers critical areas such as the bridge, deck, mooring lines, and rudder angles across various vessel types. By accurately detecting potential risks and delivering timely alerts, MetaSight enable you to address issues early, preventing them from escalating into costly incidents and ensuring the safety of your voyages.

MetaSight offers a highly professional, precise, collaborative, and effective intelligent solution for:

• Detecting Potential Hazards More Precisely and Earlier

By integrating video with multi-source information and building in 30+ unique models, MetaSight significantly reduces the false alarm rate, ensuring accuracy of alerts.

• Enhancing Safety of Crew and Vessels

Capable of simultaneously recognizing over 30 different scenarios and applicable to various ship types, MetaSight effectively mitigates 90% of risky behaviors.

• Providing Remote Assistance & Collaboration

MetaSight establishes seamless communication between ships and shore, ensuring vessels are no longer isolated at sea and can access external expertise to address complex issues promptly.

• Improving Management Efficiency with Reducing Cost

By ensuring all critical areas are continuously monitored, MetaSight provides deep insights into vessel performance and risk factors to help you maintain the vessel's operational integrity, preventing costly downtimes and reducing the manpower needed for routine visual checks.

