

Stagnant Intelligent Unmanned Lighting System



EVAtech
伊 娃 云 智

PHOTONGUARD -- AI Hovering & Lighting System



★DOH Instantaneous Heat Dissipation System

Stable cold light source operating temperature
Patented super efficient instantaneous heat transfer technology
Streamlined air duct accelerates heat dissipation airflow speed.



★ DOH High Efficiency Lighting System

Lighting power: 800W~1000W cold light source
Lighting angle: 0~90° remote adjustment

★ Live on Air

Build a high-definition video head at the high point, 360° of situational awareness, live and uninterrupted video feed to the command center



Communication Base Station Services *Expansion*

5G & 4G communication base station



Emergency Supplies Airdrop *Optional*

Desert island emergency medicine, food and life-saving equipment airdrops

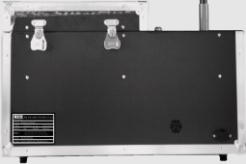


Amplified Sound Function *Optional*

On-site air command
Air Focused Warning Notice
Aerial alerts

★ All-in-one Smart Hangar

AI One Touch Control System
AI Security Control System
AI Tethering Control System
AI Power Control System
AI Data Control Centre



Distributor: Tecway (HK) Ltd.

Large-scale Lighting -- illuminates 2 football pitches, 20 acres of land, 13,266 square metres

- **Self-developed, technically controllable**
- **DoH ultra-light cold light source**
Volume, weight less than 6% of similar products, stable working temperature can be touched. ;
- **Lamp set power : 800 W**
- **Illumination area:>13,000 m², optimal lighting height 50 m**
- **Total luminous flux:180,000 lm.**



Distributor: Tecway (HK) Ltd.

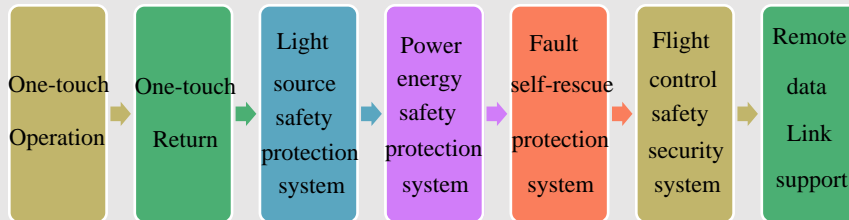
AI-- Easy to use and Flexible scheduling

Easy

Intelligent control over the whole process



- One-touch operation
- One-touch return
- One-touch protection
- One-touch take-up



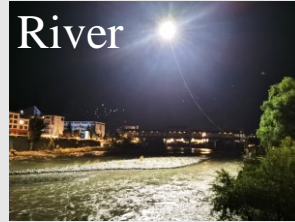
Flexibility

Easy adjustment within a 300m operating range

- Extra-long lightweight cables with ultra-high voltage plug-and-play connection
- Real-time extension of the tethered cable length.
- 300m range, flexible in the air as required



PHOTONGUARD -- Long-lasting, Trust-worthy



All-weather

Wind resistance: 14m/s

Rain resistance: Heavy rainstorms

All-terrain

System weight: 18Kg

Individual-carriable

Ideal for

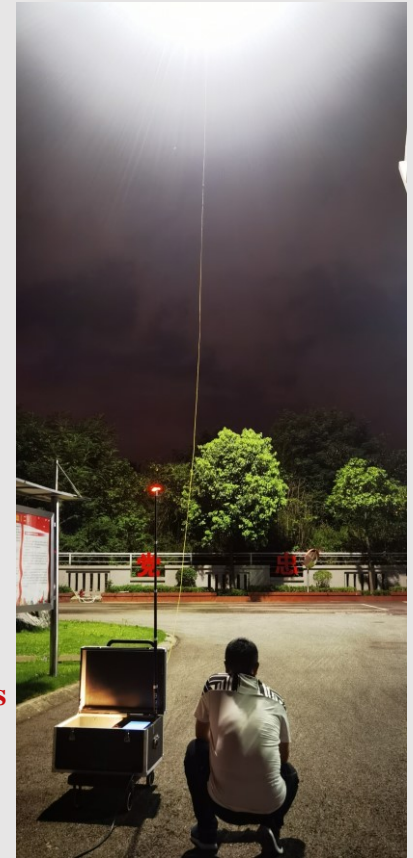
- Disaster Rescue
- Maritime Rescue
- Mine Rescue
- Railway Rescue
- Highway Rescue
- Night Operations
- Major Accident Response

Take-off Altitude : 4100m

- Forests
- Cliffs
- Oceans
- Rivers
- Lakes

Longer Endurance Time

- Stagnant aerial lighting time **>12H**
- Repeat take-off and landing **20 times**
- Continuous working time **4 Days**



Distributor: Tecway (HK) Ltd.

Extended Functions

★ Live on Air

Build a high-definition video head at the high point, 360° of situational awareness, live and uninterrupted video feed to the command center



Communication Base Station Services *Expansion*

5G & 4G communication base station



Amplified Sound Function *Optional*

On-site air command
Air Focused Warning Notice
Aerial alerts



Emergency Supplies Airdrop *Optional*

Desert island emergency medicine,
food and life-saving equipment airdrops

PHOTONGUARD -- Product Series

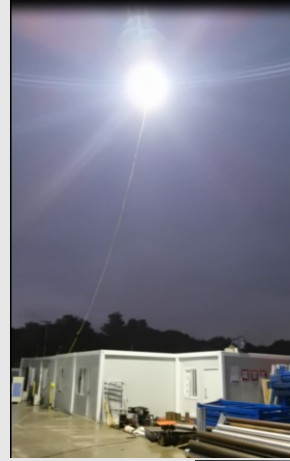
Project	Basic Version	AI Version	SuperAI Version
Aircraft	Huineng 175 aircraft * 1	Huineng 177 aircraft * 1	Huineng 177Pro aircraft * 1
Ground hangar	-- Hangar display system center *1 -- Hangar power management system *1 -- 5G/4G/2G data link system (Optional)	-- Hangar intelligent control system 1 -- AI One touch control system -- Hangar intelligent power system *1 -- 5G/4G/2G data link system (Optional)	-- Hangar intelligent control system * 1 -- A1 One touch control system -- Hangar intelligent power supply system * 1 -- 15G/4G/2G data link system * 1
Emergency ground station	-- Intelligent manual ground station -- External data link (Optional)	-- Intelligent manual ground station * 1 -- External data link * 1	-- Intelligent manual ground station * 1 -- External data link * 1
Lighting	--DOH flood lighting system * 4 Optional: -- DOH multi-dimensional lighting system * 2 -- DOH intelligent flood lighting system	--DOH intelligent flood lighting system * 2 --DOH intelligent 3D lighting system * 2 --DOH intelligent detection system (Optional)	-- DOH intelligent flood lighting system * 4 -- DOH intelligent 3D lighting system * 1 -- DOH intelligent detection system* 1
Tethered cable system	-- Manual cable take-up system * 1 Optional: -- Intelligent cable retracting and releasing system -- Cable extension system (50m)	-- Manual cable take-up system * 1 --Intelligent cable retracting and releasing system * 1 -- Cable extension system (200m) (Optional)	-- Manual cable take-up system * 1 -- Intelligent cable retracting and releasing system * 1
Visual perception system	Optional: -- HD perception PTZ -- Double cursor heat clearing sensing PTZ	-- HD perception PTZ * 1 Optional: -- Natural /infrared light HD/HD/UHD thermal sensing/tracking PTZ -- all-weather three light perception tracking PTZ	Natural /infrared light HD thermal sensing PTZ * 1 Optional: -- Natural /infrared light HD/HD/UHD thermal sensing/tracking PTZ
Ground power supply system	-- External power connection * 1 -- Ground standby power generation system (Optional)	-- External power connection * 1 -- Ground standby power generation system "1"	-- External power connection * 1 -- Ground standby power generation system * 1
Value-added services	Optional: -- Mobile communication relay service -- Telecommunication trunk service -- Wireless communication relay system -- Air PA system	Emergency throwing system optional: Aerial remote laser identification system Mobile communication relay service Telecommunication trunk service Wireless communication relay system Aerial public address system Emergency throwing system Aerial remote sensing system	Aerial public address system * 1 Emergency throwing system * 1 Optional: Mobile communication relay service Telecommunication trunk service Wireless communication relay system Air detection system Aerial remote sensing system
Auxiliary decision system		(Optional) -- Target intelligent early warning system	Target intelligent early warning system * 1
After-sale service	--1 year warranty service * 1 Optional: -- 1 year original factory service support	--1 year warranty service * 1 --1 year original factory service support * 2	--1 year warranty service * 2 --1 year original factory service support * 3

Cases---Emergency Drill



Distributor: Tecway (HK) Ltd.

Cases----Construction Site & Rescue



Chongqing - Mountain Fire Rescue

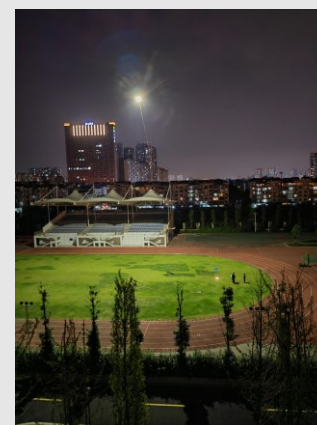
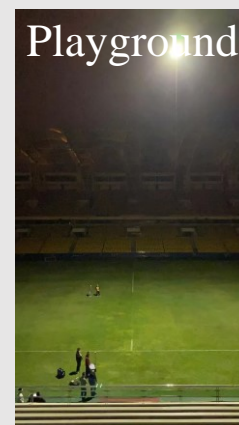
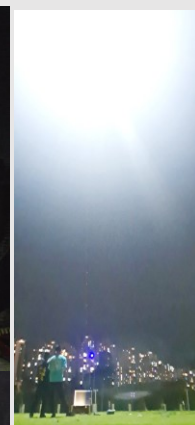
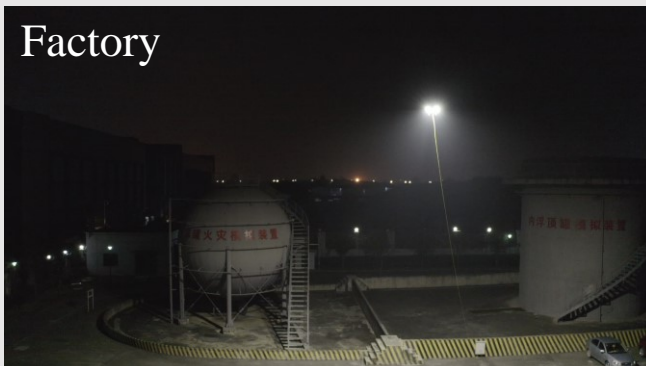
Shanghai- Subway Station Construction Site

Jiangsu - Construction Site

Highway Entrance



Case---Night Lighting



Distributor: Tecway (HK) Ltd:

After-sale Service



Remote Service

We provide remote product instruction and teaching services for our customers to ensure maximum customer satisfaction.



On-site Service

Engineers arrive at the customer's site to provide guidance on the use, operation and commissioning, maintenance and repair, fault clearing and technical upgrading services



Depot Service

Customers can send the faulty products back to the original factory for repair through logistics.



Warranty Replacement Service

In the warranty period occurred within the non-human failure of Inthe product, we will provide you with parts only replacement not repair services.



Intelligent Upgrade Service

We will optimize and upgrade the product software from time to time, customers can contact the account manager to upgrade according to their needs

Application Scenarios

Large area stagnant intelligent lighting system, a single machine can illuminate 2 soccer fields 20 acres. Small size, light weight, easy to use, flexible scheduling, lighting regardless of time, environment, climate restrictions on the application of the whole scene, continuous lighting time of more than 12 hours.

Safety production: Railway emergency lighting, road emergency lighting, mine rescue lighting, oil and gas field construction lighting, temporary production lighting, construction lighting, etc.

Disaster rescue: Forest fires, landslides, mudslides, flood relief, rain and snow relief, etc., site lighting, supply transfer station security lighting, command site lighting, temporary settlement lighting, etc.

Night work: Fire scene lighting, traffic accident disposal lighting, checkpoint lighting (border defense, public security), water rescue lighting, maritime rescue lighting, flood rescue lighting, landslide mudslide rescue lighting, etc

Life & entertainment: Community emergency disposal lighting, event lighting, movie night shooting lighting, night market lighting, etc.

Benefits

Brightness: 180,000lm, 13,000m illumination area, bright enough to read books

Lightweight: The total weight of the system 18Kg

Lightweight: one key intelligence, AI full process control, easy to operate

Features

Applicability: All-weather, all-terrain, all-scene application. Resistant to 14m/s winds, heavy rainstorms, 300 meters working range

Extensibility: Emergency supplies airdrop, air boardcast, long distance lighting, communication relay, high-altitude warning, synchronous multi-aircraft, etc.,

Can be live: Equipped with high-definition video head, 360 ° no dead angle perception of the whole field situation, the scene video uninterrupted live to the command center